

Inseego Connect™

Deployment, remote management and monitoring simplified

Inseego Connect is the new cloud-based configuration and monitoring application provided by Inseego. Customers can remotely monitor device health and status with powerful dashboards and insightful diagnostics.

View & Configure Device Inventory

Remotely configure device settings, centralize device information, and pinpoint asset location.

Predict Data Usage

Set data usage thresholds, alerts, and notifications to avoid overage fees. Monitor data usage on pooled data plans.

Monitor Health & Performance

Analyze key health metrics like signal strength and temperature readings. Troubleshoot inconsistent connections and generate critical alerts.

Analytics & Dashboards

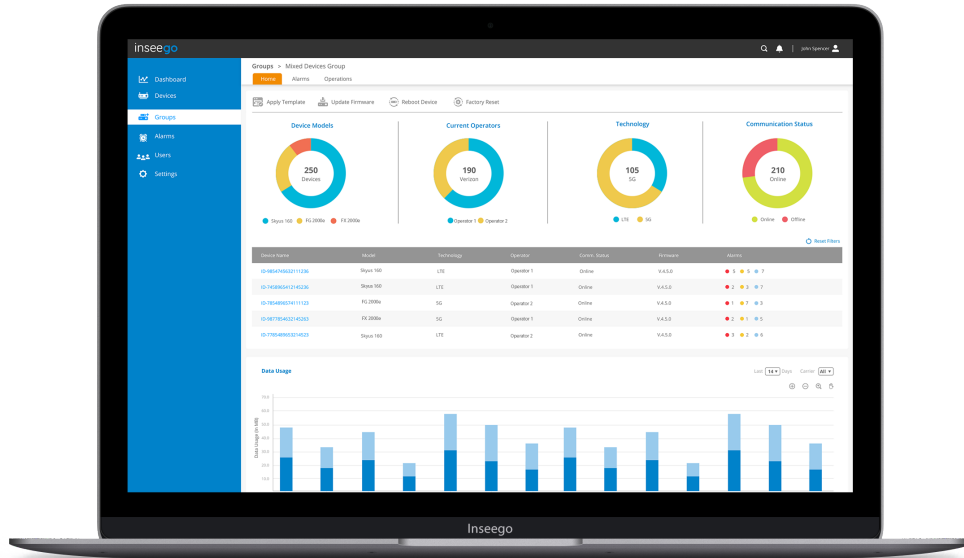
Supervise your deployment with informative dashboards and identify rogue users who are consuming excessive data.

GPS-Based Location Services

Track current and historical device location. Find lost equipment and receive alerts of theft.

Mobile Support

Monitor and manage your devices while on-the-go. Support for professional and self installation of Inseego 5G devices.



Inseego Connect Features

Device Data & Diagnostics

- Inventory data (model, firmware, IMEI, etc.)
- Network data (signal strength, data usage, etc.)
- Hardware data (GPS, battery stats, GPIO readings)*
- Identify trends with configurable charts*
- 90 days of data storage*

Device Groups

- Logical groups for simplified device management
- Static and dynamic group definitions

Device Configuration

- View and edit all device settings
- Bulk configure groups of devices
- Initiate firmware updates
- Remotely reboot and factory reset devices

EMAIL - inseego.sales@dickerdata.com.au
 Call your Dicker Data Representative on 1800 688 586

Visit us at our website: inseego.com

Specifications are subject to change. Please see your Inseego contact for more details. ©2021 Inseego Corp. All rights reserved. The Inseego name and logo are trademarks of Inseego Corp. Other Company, product or service names mentioned herein are the trademarks of their respective owners.

*Select features available only in Inseego Connect Advanced

Alarms

- Set alarm priority and schedule when active
- Monitor individual or groups of devices
- Select recipients for in-app and email alerts
- Geofence alerts to detect device movement*

Dashboards

- Overview of inventory, data usage & active alarms
- Map view of all device locations*

User Management

- Easily add and delete users
- Configurable role-based user permissions*



Available now on iOS and Android.
 Download today!

DICKER
 O A T A